

Human TSLPR Protein

Cat. No. TSP-HM10R

Description

Source	Recombinant Human TSLPR Protein is expressed from HEK293 with His tag at the C-Terminus. It contains Gly25-Lys231.
Accession	Q9HC73-1
Molecular Weight	The protein has a predicted MW of 25.1 kDa. Due to glycosylation, the protein migrates to 40-50 kDa based on Bis-Tris PAGE result.
Endotoxin	Less than 1EU per μg by the LAL method.
Purity	> 95% as determined by Bis-Tris PAGE > 95% as determined by HPLC

Formulation and Storage

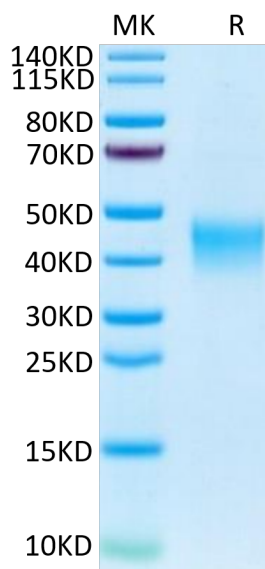
Formulation	Lyophilized from 0.22 μm filtered solution in PBS (pH 7.4). Normally 8% trehalose is added as protectant before lyophilization.
Reconstitution	Centrifuge the tube before opening. Reconstituting to a concentration more than 100 $\mu\text{g}/\text{ml}$ is recommended. Dissolve the lyophilized protein in distilled water.
Storage	-20 to -80°C for 12 months as supplied from date of receipt. -80°C for 3 months after reconstitution. Recommend to aliquot the protein into smaller quantities for optimal storage. Please minimize freeze-thaw cycles.

Background

TSLP is an epithelial cell-derived cytokine synthesized in response to various stimuli, including protease allergens and microorganisms like viruses and bacteria. Biological functions of TSLP require heterodimer formation between the TSLP receptor (TSLPR) and IL-7 receptor- α , which polarize dendritic cells to induce type 2 inflammation and directly expand and/or activate Th2 cells, group 2 innate lymphoid cells, basophils, and other immune cells.

Assay Data

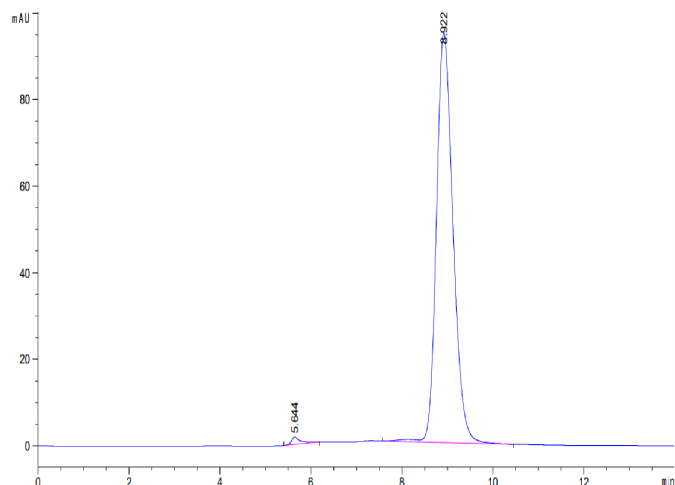
Bis-Tris PAGE



Human TSLPR on Bis-Tris PAGE under reduced condition. The purity is greater than 95%.

SEC-HPLC

Assay Data

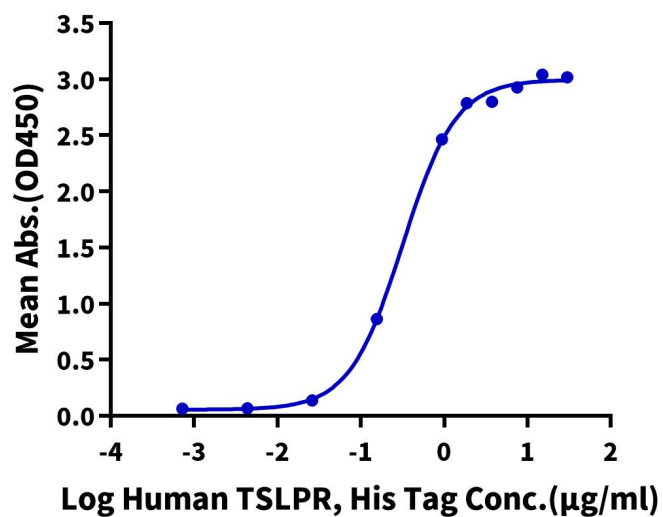


The purity of Human TSLPR is greater than 95% as determined by SEC-HPLC.

ELISA Data

Human TSLPR, His Tag ELISA

0.5µg Human TSLP, hFc Tag Per Well



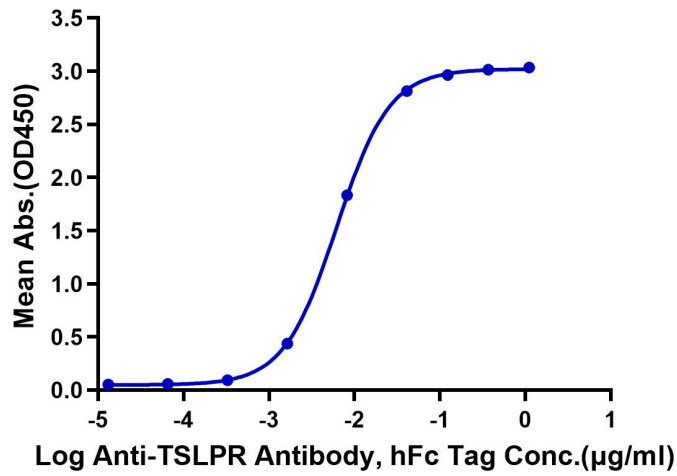
Immobilized Human TSLP, hFc Tag at 5µg/ml (100µl/well) on the plate. Dose response curve for Human TSLPR, His Tag with the EC50 of 0.32µg/ml determined by ELISA (QC Test).

ELISA Data

Assay Data

Human TSLPR, His Tag ELISA

0.05µg Human TSLPR, His Tag Per Well



Immobilized Human TSLPR, His Tag at 0.5µg/ml (100µl/Well) on the plate. Dose response curve for Anti-TSLPR Antibody, hFc Tag with the EC50 of 6.2ng/ml determined by ELISA.